

ALFA
TELECOM

ألفا
للإتصالات

**TWO-WAY
RADIO
COMMUNICATION
SYSTEM
SOLUTIONS**



**IT
SOLUTIONS
PROVIDER**



+974 5520 1410

+974 5050 3755



alfatelecom.com.qa



Phone : +974 4432 4447 | Fax : +974 4432 4448

INTRODUCTION

ALFA TELECOM founded by a group of Amateur Radio Operators from the State of Qatar, A71MA, Shk. Mohamed Al Thani & A71BI Mr. Ibrahim Mohammed Ali Al Shahri, in the year 1997 for importing & supplying commercial & amateur radio equipment focusing The State of Qatar & extending its services & supply to the Entire Gulf States, thus summing up the business & hobby altogether! since the formation ALFA TELECOM serving the needs of the QATAR market with high quality equipment's in HF/VHF/UHF radio and devices.

ALFA TELECOM IT Division was established in 2021, with a view of providing business solutions to a wide spectrum of clients in both private and public with the best business consultancy solutions. ALFA TELECOM is one stop ICT and security solution provider, with expertise on Managed IT and Security solutions.

With an experienced team of dynamic consultants follows a culture of adding value to all our clients through sustained and focused commitment to achieve defined objectives.

VISION & MISSION

Our Vision:

Be an innovator in introducing various ICT and Security services to incorporate all the existing companies and lead the ICT and Security market.

Develop a one shop stop solution to serve the client by offering a wide range of services.

Deliver the best of services to the clients with expertized human resources.

To provide quality services that exceeds the expectations of our esteemed customers

Our Mission:

To build long term relationships with our customers and clients and provide exceptional customer services by pursuing business through innovation and advanced technology.

Regional expansion in the field of enterprise ICT and Security management and develop a strong base of key customers.

Increase the assets and investments of the company to support the development of services.

To build good reputation in the field of ICT and security management and become a key player in the industry.

Available in a range of sizes, from mini-towers to rack-capable platforms, PowerEdge tower servers offer the performance, versatility and quiet operations that are ideal for small, large, and remote offices.



Compact. Modular. Flexible



Powerful. Scalable Solution



Servers and Storage

Towers, Rack Servers, Blade, Workstations, NAS, Backup Solutions & More



To us every client is unique and we focus on identifying their needs uniquely. Our service delivery is Founded on the following core values: -

Achieve success and recognition by using the following tools (CUES): -

- **Commitment**
Our professional team has an absolute commitment to client services. We are dedicated to providing quality work to our clients.
- **Understanding**
Our approach to all clients' services is founded upon understanding the needs and problems of our clients. Our familiarity with business circumstances makes us better placed to meet our Client's needs.
- **Experience**
Our consulting team is formed with professionals with many years of relevant practical experience in their respective disciplines.
- **Support**
Our main belief is that a solution is not good until it is implemented. When our clients are happy with our solutions, we are a billion times to see our efforts helping them achieve their goals.



We believe in treating our customers with respect and faith.

We grow through creativity, invention and innovation.

We integrate honesty, integrity and business ethics into all aspects of our business functioning.

Whatever your business requirements Dell Servers are the perfect fit for your IT needs. From scalable, effective rack server solutions, deployable in any IT environment to extremely powerful, dense computing solutions. Dell will assist you to improve efficiency throughout your businesses IT infrastructure



SERVICES OFFERED

Infrastructure Management Services

We offer reliable business IT support solutions for virtually all types of small, medium and Large Business entities. From complete IT support and staffing to supplemental and specialized IT support for your company's staff, we can assist your organization with all of today's technology challenges.

When choosing a service provider, recommendations, qualifications and experiences in business are important attributes to take into consideration. Our staffs are highly experienced and fully certified professionals to handle a wide spectrum of business IT support services.

Creative, Professional, Adaptive IT Support Solutions

Unlike other business IT support and consulting companies, here at ALFA TELECOM, we pride our team based on its unique combination of creative, adaptive, and highly professional experts. Not only do we offer years of experience providing advanced IT support solutions for many different businesses, organizations, and institutions, but we also embrace emerging and cutting-edge technologies and computer systems to help our clients succeed.



While our business IT support solutions have certain systems in place, we adapt to the unique needs of each and every client that we serve. Spanning from IT staffing services for schools and educational institutions to ongoing IT support solutions for enterprise-level companies, we are well-versed team in all aspects of information technology.

Enterprise IT security | Enterprise Network Firewalls

We specialize in helping our customers implement security transformation plans and maintain an up-to-date security posture in a well-articulated, efficient and meticulous manner, across IT & business functions.

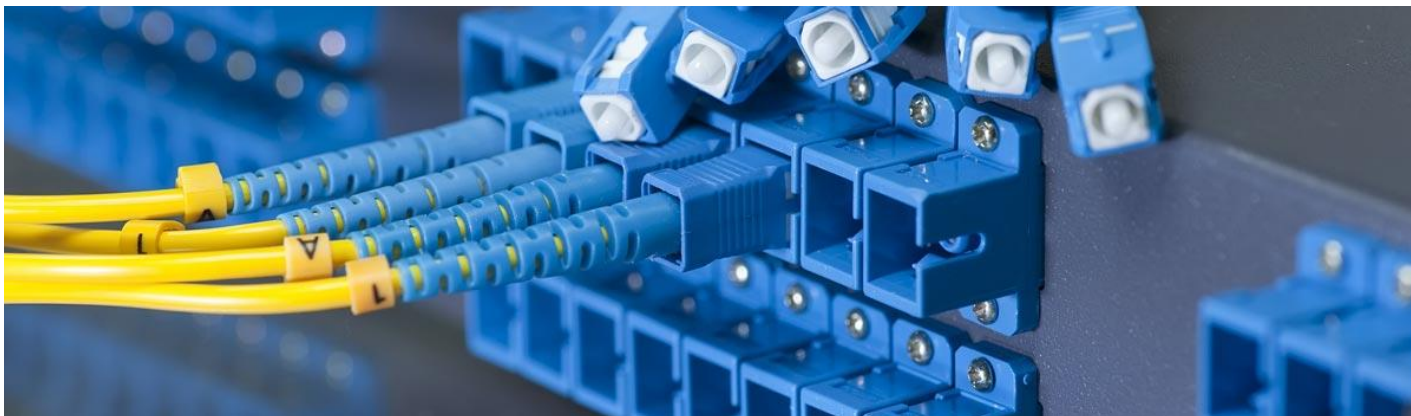


Our idea is to be a preferred long-term security partner to our customers and help them implement security solutions in complex estates. Over a period, we have built an experienced team security consultants, customized security solutions, and investments in Centers of Excellence to assist our customers in achieving a robust security posture. Our clients benefit from engagements covering a wide risk-management strategy with reducing administration & operative costs and improved efficiency.



Network & Data Solutions

Our Network Technology Solutions provides end-to-end lifecycle services, from designing and planning to operating and optimizing communication networks. From Basic Networking to High end Telecom networks we offer reliable and progressive solutions.

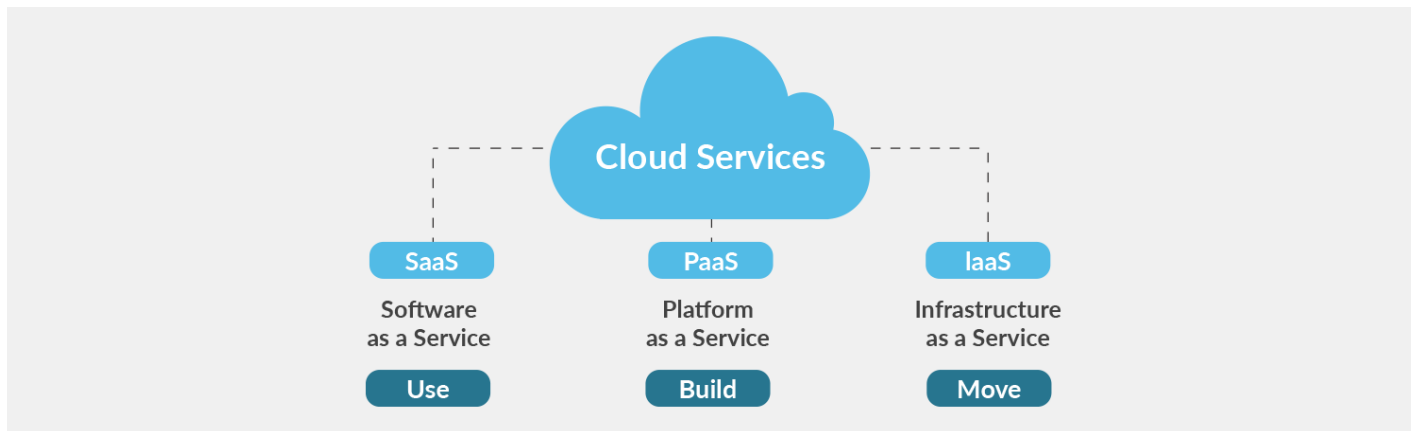


We are expert in LAN and WAN connectivity solutions, Routers, Switches, Enterprise Wifi Solutions.

Cloud Services

As the World is moving towards Cloud Solutions, we also need to be part of it for a competitive edge. Cloud based solutions are an integral part of an Organization nowadays due to reliability and cost effectiveness. Your Capex investment is drastically reducing when we chose from offerings from Cloud comparing to on premise solutions. It also reduces management efforts to run an on-premise infrastructure.

Our team is expertise in Cloud based solutions for setting up a basic email or App server to setting up a Data center for an Enterprise Client. Today most of the large Enterprises are setting their Data Center in Amazon Cloud which provides security and service availability with 0 Capex investment.



Access WiFi Anywhere with a Secure,
Private, High-speed 5G Connection



TAKE 5G HOME

5G AC2600 Wi-Fi Router **DWR-978**

- 5G**
5G CONNECTION SPEEDS
- AC2600**
AC2600 Wi-Fi
- GIG**
GIGABIT ETHERNET PORTS
- CONNECT UP TO 128 DEVICES**
- MU-MIMO**

LHG LTE kit

LHG 2G/3G/4G/LTE High gain 17dBI CPE for very remote areas,
International bands



We specialize in helping our customers implement security transformation plans and maintain an up-to-date security posture in a well-articulated, efficient and meticulous manner, across IT & business functions. Our wide range of service offerings spanning Consulting, System Integration, Security Testing & Security Operations, is designed to mitigate external & internal risks for their current & evolving business processes as well as their IT infrastructure, ensuring security completeness at for all aspects of the business.

Our idea is to be a preferred long-term security partner to our customers and help them implement security solutions in complex estates. Over a period, we have built an experienced team security consultant, customized security solutions, and investments in Centers of Excellence to assist our customers in achieving a robust security posture. Our clients benefit from engagements covering a wide risk-management strategy with reducing administration & operative costs and improved efficiency.

SOPHOS
Cybersecurity evolved.



Our Services

Our value-based partnership approach has been designed to provide our customers with reputation protection, asset protection and compliance. This is achieved through services across the following four categories.

Consulting and Compliance services, where we carry out IT Risk Assessments and benchmarking of organizational security against international standards & best practices. We also help design security frameworks, policies and procedures to uplift the security maturity of an organization.

System Integration services, where we deploy & customize security products across the application estate and network infrastructure.

Security Testing and Review services, where we test the compliance & adherence of enterprise, web & mobile applications to organizational security policies, regulatory requirements and industry standards. Security Operations and Monitoring services, where we provide round-the-clock management and monitoring services for security infrastructure.

Meeting room into a collaboration space



At present, one firm that is transforming how teams collaborate, eliminating boundaries, and opening new possibilities using a beautifully designed video collaboration solution that is affordable and fit size for all rooms is Logitech. Logitech video conferencing



Network Backup and Restore

For many small businesses, though, their backup and storage strategy hasn't caught up with their more pervasive use of computers. This could be due to confusion about the various storage options, or a failure to understand that the old paradigm of the occasional batch backup is no longer adequate.

BUFFALO

NETGEAR[®]
Connect with Innovation™

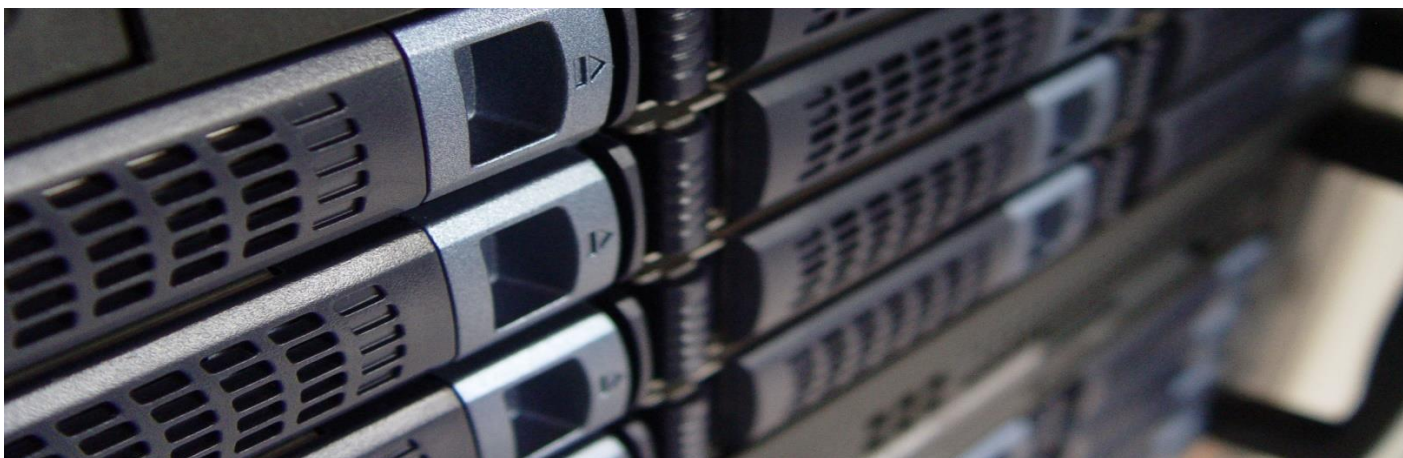
QNAP

WD Western
Digital[®]

A storage vendor representative will have you believe that it offers the perfect backup hardware for your business. However, backup is more than hardware, since storage needs for individual organizations invariably differ. This means a one-size-fits-all mentality is doomed to offer a mediocre fit in terms of either budget or functionality.

Direct attached storage: DAS denotes storage devices that are connected directly to a PC or server, typically using a USB 2.0 or USB 3.0 peripheral port.

Network attached storage: A NAS appliance is a storage device that connects directly to the network. It features the attendant capabilities of a file server and accepts multiple storage drives. Redundancy is offered in the form of RAID capabilities, as NAS supports various file protocols to work directly desktops and laptops. NAS models offer the capability to synchronize selected folders or volumes with a second, remote NAS that supports the capability.



Online storage: While it may seem intuitive to lump all online storage into the same category, there are actually two distinct types of offerings. Some, such as Amazon Simple Storage Service (S3), serve as the cloud version of storage devices for the Amazon Elastic Cloud Compute platform. Then there's the online storage designed to help consumers and businesses store or back up data in the cloud.



+974 5520 1410
+974 5050 3755
alfatelecom.com.qa

Yeostar understands the communication requirements of our customers and the value of a robust, easy-to-own, easy-to-manage, and adaptable UC PBX system



Yeostar | S-Series

Meet Your Next VoIP PBX
INTRODUCING THE ALL NEW S-SERIES



Easy to install



Simple to manage



Built to perform



Yealink



We place an operationally ready server into production that meets your compliance and performance standards, your devoted engineers can continue focused on the company's mission-critical objectives.

High Performance Server Configurations can protect your business from unexpected server crashes, lost data, and lengthy downtime. They provide increased security, flexibility, availability, and performance for customers whose hosting needs have grown rapidly or whose websites have seen significant traffic spikes. Our technicians have carefully designed each configuration with full redundancy through scalable server clustering to provide fail over in the event of increased traffic or error. Discover the power of a high-performance environment with on-demand scalability, reliable load balancing, and unmatched availability, and secure your data like never before.

We do

- Server configurations and builds, including additional components
- Operating system installation, configuration, and patching
- Security software installation and configuration
- Image management and maintenance.

Supported Platforms

- Windows and Linux Flavors
- Microsoft Exchange and Active Directory
- Mail, File, Web, DNS and Application Servers
- Zimbra Collaboration Suite
- VMware
- MS SQL, MySQL, PostgreSQL, Oracle





+974 5520 1410

+974 5050 3755



alfatelecom.com.qa



Managed Guest WiFi Solutions for Restaurants



The standard for high-performance Wi-Fi

A thoughtfully designed product family



Offer customers free WiFi with our WiFi solution for restaurants and cafés. Fully compliant, our WiFi system is great for marketing offers to customers.



Visitors to your restaurant may want fast and easy access to the Internet. Perhaps they want to check up on social media, check-in or chat online while dining with friends. So, why not let them with our easy WiFi solution for restaurants.

WiFi
ZONE

Voice and Telephony Solutions

Unified Communication is a spectrum of capabilities designed to increase productivity and collaboration among users across a variety of mediums.



With our Unified Communications solution, enterprises trade complexity for plug-and-play simplicity in integrated voice, video, data, and mobile communication.

AVAYA



Polycom

Yeastar



Asterisk

We focus on designing and implementing Voice solutions to small Business to Large Call Centers.

CCTV Solutions

No matter what perimeter you wish to protect, you deserve a security solution you can trust around the clock, and in any weather and light conditions. A perimeter protection solution detects potential and real intrusion threats, and allows you to take quick action when something really happens.

ALFA TELECOM is a reliable and visionary CCTV and security system supplier. By deliver the best quality CCTV products at the reasonable price.

HIKVISION UNV dahua
TECHNOLOGY

We supply top range IP and Analog CCTV cameras with frontier technologies. We also supply CCTV Digital Video Recorder and Network Video Recorders. By combining the most advanced security hardware and software, our CCTV product has protected hundreds of processions.



Yeastar S-Series VoIP PBX Performance and Power

Easy to use, reliable, and feature-rich, S-Series is designed to help small and medium businesses make a giant leap in efficiency and cost savings. The innovative S-Series unleashes the power of unified communications, provides great flexibility with field-upgradable modular design, and allows you to connect to traditional lines, VoIP lines, and cellular networks. Perfectly future-proof, S-Series converges business-enhancing features with free software updates to grow with your business and assures reliability over the years.

Appreciate the Easy-to-use Solution

The S-Series features fast installation with comprehensive auto provisioning, advanced plug and play capability, together with an intuitive Metro UI driven by point-and-click configuration, from any location.

Your Choice of Technologies and Features

With a unique modular design, the S-Series will install into the most demanding of environments. You can also take advantage of advanced enterprise grade features with the fullest and most complete software versions.

Telephone System without Risk

S-Series is built with the future in mind, utilizing the latest technology advances, from Freescale industrial grade Quad Core processors, TI DSP voice processors, and long-life power units and lightning protection.

Play Safe and Expect Reliability

With advanced failover, security, monitoring and reporting capabilities as standard, combined with an internal firewall and with support for TLS and SRTP encryption, there has never been such a robust system.

Key Features and Benefits

- Linkus UC Clients for Desktop and Mobile
- Works with SIP/IAX2, PSTN lines, ISDN BRI, E1/T1/PRI, and GSM/3G/4G
- Built-in call recording capability
- Powerful Apps (add-ons) include Linkus Server, Auto Provision, LDAP, Conference Panel, VPN Server, Billing App*, Hotel App*, and more
- Control and manage customer-premises PBX easily and quickly with Remote Management
- Convenient integration with call center, PMS, and CRM
- Connect multiple sites and remote users instantly
- No hidden charges and extra licensing fees
- Low power consumption (1.8-59.1 watt)

5/F, No. 63-2 Wa

r.com



Access Control Systems / Time & Attendance

Our products also comprise Biometric Access Control Systems, Time-attendance and HR Management Systems, Audio/Video Door Communication Systems, Face Detection System, etc. among many others. We boast of a strong industrial competence along with specialized high-performance technology and state-of-the-art equipment required towards security and surveillance.



We take pride in our products and services, working towards a mission of 'securing your world'.

Managed Services

We serve the SMB and nonprofit sectors and when we say we're "managing IT for you," it means we cover what you need most: IT managed services, disaster recovery & business continuity, IT refreshes and hardware and software upgrades. We can also guide you on decisions about "the cloud" and help you get off-premise apps and storage ONLY where they make sense for your business.

So, trust in your hometown IT Company... we know how you want to do business. And that's exactly how we deliver it!

- Desktop Application Management
- Application and Antivirus Updates
- Backup planning and implementation
- Manage Network and Security
- Servers and Applications Management
- Vendor Coordination
- Remote and Onsite Technical Support
- Hardware installation



Integrated Video Communications Solution

GXV3370 IP Video Phone for Android™

The GXV3370 is a powerful desktop video phone for enterprise users. It features a 7" touch screen, advanced megapixel camera for HD video conferencing, built-in WiFi and Bluetooth, Gigabit network speeds and innovative telephony functionalities. It also runs on Android 7.0 and has flexible SDK support for custom apps. The GXV3370 is fully interoperable with nearly all major SIP platforms on the market and can be seamlessly integrated with Grandstream's portfolio including SIP based security cameras, door systems, IP PBXs, and video conferencing systems and services. This video phone is the perfect choice for users looking for an integrated video communications solution for their desktop.



16 LINES

16 lines with up to 16 SIP accounts



Built-in mega-pixel camera for video calling with privacy shutter



Runs on Android 7.0 operating system



Built-in Bluetooth for syncing with mobile devices and connecting Bluetooth headset



Gigabit

Dual-switched auto-sensing 10/100/1000Mbps network ports



Integrated dual-band WiFi (2.4GHz & 5GHz)



Built-in PoE/PoE+ to power the device and give it a network connection



Speakerphone with HD acoustic chamber, advanced echo cancellation & excellent double-talk performance



4-core 1.3GHz ARM Cortex A53 processor with 2GB RAM and 8GB eMMC Flash



7" (1024x600) capacitive 5-point touch screen TFT LCD



TLS and SRTP security encryption technology to protect calls and accounts



7-way audio conferencing & 3-way 720p 30fps HD video conferencing capability

www.grandstream.com





HD IP Video Door System GDS3710

The GDS3710 is an IP Video Door System that also serves as a high-definition IP surveillance camera and IP intercom to offer facility access control and security monitoring for buildings of all sizes. This powerful IP Video Door System offers a 180-degree video viewing angle for wall-to-wall coverage, has a built-in RFID chip reader for secure keyless entry, includes a built-in microphone and speaker to support intercom functionality and offers alarm-in and alarm-out support for integration with existing security devices. The GDS3710 integrates with Grandstream's free management utility software, GDS Manager, allowing RFID card information, video feeds as well as the device itself to be fully managed by this software. Powered by an advanced Image Sensor Processor (ISP) and state-of-the-art image algorithms, the GDS3710 delivers 1080p FHD video resolutions and offers exceptional performance with HTTP API for 3rd party redevelopment. It features SIP/VoIP technology with 2-way audio and video streaming feeds loaded directly to smart phones, SIP endpoints and the GDS management software. The GDS3710 is equipped with integrated PoE for seamless installation, bright LEDs for illumination, motion detector for security protection, lighting control switch and more. The combination of the GDS3710, Grandstream's GXP21xx IP phones, GXV video phones, and GS-Wave mobile app provide a complete end-to-end solution for access control, video intercom, and security recording needs.



Powerful video resolutions up to 1080p



Built-in RFID chip reader for keyless entry



SIP video streaming to video intercom stations, IP phones, or smart phones simultaneously



Built with a metal casing to make it weatherproof and vandal resistant



Built-in hemispheric camera allows for 180-degree wall-to-wall coverage



Supports motion detection



Integrated PoE to power the device and provide a network connection



Built-in microphone and speaker offers voice options and intercom functionality

www.grandstream.com





VIDEO INTERCOM SYSTEM LINE-UP

VL-SW274
Expandable 2.4 GHz Wireless Series



VL-SW251
2.4 GHz Wireless Series



VL-SVN511
Smartphone Connect Series



VL-SV71
Entry Series



VL-SV30
Entry Series



Home WiFi





C1C

HD Resolution Indoor Wi-Fi Camera

As Sharp-Eyed as an Owl

This is where smart home security meets sharp night vision. Designed for simple and quick installation, the C1C's super night vision safeguards every corner – even in places without illumination.

- FHD** 720p/1080p
- Supports 2.4 GHz Wi-Fi
- 110°/130° Wide-Angle Lens
- Two-Way Talk
- Infrared Night Vision (Up to 12 meters)
- Supports MicroSD Card (Up to 256 GB)



C1C 720p

C1C 1080p



C1C 720p
Mic is here



C1C 1080p
Mic is here

Super Vision, Even at Night

Get better night vision at increased distances with the C1C and enjoy round-the-clock protection. The advanced infrared LED lights along with an upgraded optical configuration means that even in dim light, you can still see up to 12 meters (40 ft.).



Always in the Know

You can't always be there – or can you? Featuring motion detection, the C1C watches over your property and immediately alerts you on your mobile device with an captured image when anything unusual happens. (Instant alerts must be activated manually.)



Communication Anytime, Anywhere

Talk to your loved ones and deter unwelcome strangers – all by using the C1C's two-way communication feature. Using the EZVIZ App on your mobile device, you can easily and conveniently enjoy communication wherever you might be.



Plug, Clamp and Go

A magnetic base and mounting kits make installation a breeze. Just place the C1C on the shelf or clamp it to the wall or ceiling, and voila! Once set up, you can manually adjust its position to monitor just about anywhere.





C3N

Outdoor Smart Wi-Fi Camera

It takes the night shift for you.

The EZVIZ C3N comes with three night vision modes and AI-powered person detection capability, providing you with sharp nighttime monitoring and precise alerts. Now you can rest easy knowing everything is protected.



Color Night Vision



AI-Powered Person Detection

FHD 1080p

H.265

H.265 Video Compression



Wi-Fi 2.4 GHz with Dual External Antennas



IP67 Dust and Water Protection



Supports MicroSD Card (up to 256 GB)



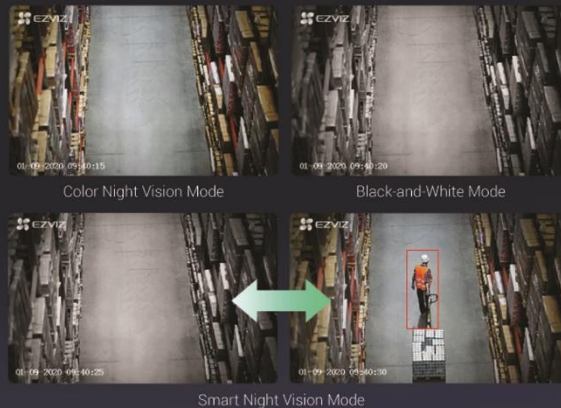
Vivid night imaging.

Equipped with professional optical lenses, two built-in spotlights, and two infrared (IR) lights, the C3N renders sharp color imaging even in pitch-black darkness. And, more than just helping produce color night time imaging, the spotlights can also be used as floodlights to illuminate hidden areas around your property.



Three night vision modes.

When extra lighting is not a necessity to you, simply switch the camera to black-and-white night vision mode via the EZVIZ App to turn off the spotlights. What's even greater is that you can select smart night vision mode. In this mode, the C3N will automatically switch from black-and-white monitoring to color monitoring, turning on the spotlights when it detects human movement. The alert video will be recorded in full-color, so you get all the details needed.



AI-powered person detection.

As an upgrade from simple motion detection, the embedded AI algorithm intelligently detects the motion of human shapes in real-time. When people enter your customized detection area, you will be alerted immediately.



More details of people captured.

The C3N is powered by advanced PQ technology that is based on intelligent sensing of the actual environment. When people approach, it automatically adjusts the image brightness to avoid overexposure. You see much more detail than the video from conventional systems.



With PQ Technology



Without PQ Technology

Proactive protection.

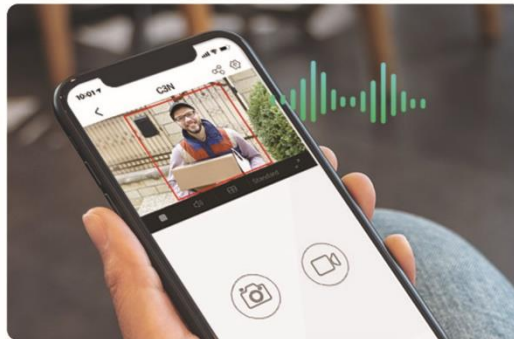
Upon detection of human movement, the C3N camera can automatically flash or be set manually to flash the two spotlights* to deter unwanted visitors. What's more, when the person turns their head to the flashing light source by instinct, they will be clearly recorded on camera.

*When the Color Night Vision mode is on, the spotlights stay on continuously and will not flash.



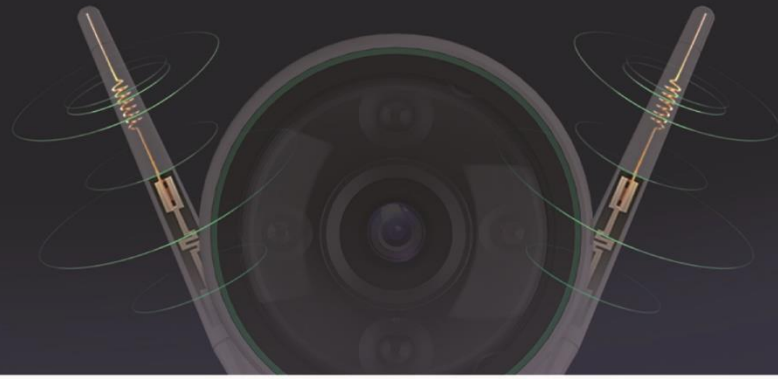
Hear what's happening.

The built-in noise-canceling microphone picks up clear audio up to 5 meters (16.4 ft.) away. Now you can hear and see what's happening in your backyard no matter where you are.



Enhanced Wi-Fi connection.

The C3N signal boasts wall-penetration and anti-interference capabilities thanks to two powerful external antennas. Even if the router is far away, the C3N is still able to stay connected stably and reliably.



Save money on storage and bandwidth.

The camera features the advanced H.265 video compression technology, achieving better video quality with only half the bandwidth and half the storage space of the previous H.264 video compression standard.



H.264 (Mainstream Video Compression)



H.265 (Upgraded Video Compression)



Built to last.

The smart camera's whole metallic enclosure provides stronger protection and enhanced heat dissipation. Plus, with an IP67 rating, it can withstand rainy, sunny, stormy, and even snowy days. Together, the C3N gives you worry-free protection throughout the year.



Easy installation.

The C3N camera features a 360° swivel and base so that you can install it on your ceiling or wall securely. With a few steps, your own sophisticated security system will be operating smoothly.





C6CN

Internet PT Camera

It's Got You Covered

Watch over your entire space with C6CN's 360-degree field of view. A full HD Wi-Fi pan-tilt camera you can always count on.

Key Features



Full HD 1080p



Two-way Talk



Smart Tracking



Supports MicroSD Cards (Up to 256 GB)



Privacy Shutter



2.4 GHz



Zero Blind Spots

Keep tabs on every corner with just one C6CN. Its expansive 360-degree field-of-view ensures full coverage, so you don't miss a thing.



Smart and Neat

When it detects a moving object, the C6CN is smart enough to automatically track its motion while alerting you with an image in real-time.



Protect Your Privacy

Want a bit more privacy? With one tap of the EZVIZ App on your mobile device, the thoughtfully-designed privacy shutter allows you to turn the lens off – whenever, wherever.



Simple and Flexible Installation

Install the C6CN the way suits your home best. Use the image flipping feature, and feel free to place it on a shelf or fix it to your wall or ceiling. Use the included screw-in mounting with the camera for maximum adaptability.



Always Connected

Connect the C6CN to your home network, either wired or wirelessly. Enjoy a stable connection without dropping out.



Multiple Storage Solutions

Save your recordings with flexible and secured solutions. The C6CN comes with a built-in MicroSD card slot that can store up to 256 GB of recorded footage. You can also save your images to EZVIZ Cloud* for additional back-up.

*Cloud storage service is only available in certain markets. Please verify the availability before making any purchase.



Supports MicroSD Card



Encrypted Cloud Storage



EZVIZ NVR





ezWireLess Kit

A comprehensive security kit with a wireless NVR and Wi-Fi cameras.

Two options tailored to meet your needs:

4 Channel X5C (ezNVR) (1TB hard drive preloaded) + 1080p C3W (ezGuard) (2.8mm) × 4

8 Channel X5C (ezNVR) (1TB hard drive preloaded) + 1080p C3W (ezGuard) (2.8mm) × 4

X5C (ezNVR) + C3W (ezGuard)

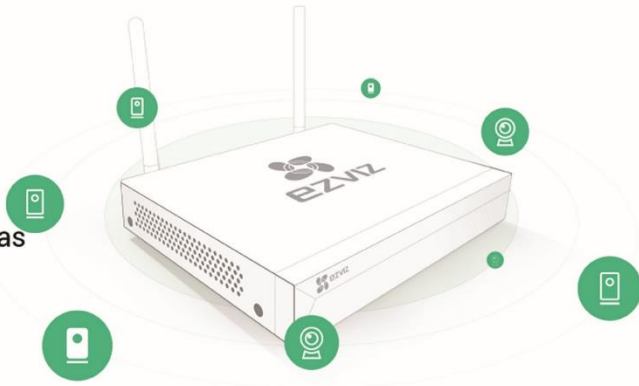


Easy to set up

We pre-pair the X5C (ezNVR) and the C3W (ezGuard) for you. All you have to do is set up the X5C (ezNVR), and you are good to go!

Supports up to 4 or 8 Full HD Wi-Fi cameras

The X5C (ezNVR) supports up to 4 or 8 Full HD Wi-Fi cameras and provides multi-split screen modes for monitoring different rooms simultaneously and a strong wall-penetrating signal so that one X5C (ezNVR) can cover a whole store.



Sound and Light, Dual Protection

The C3W (ezGuard) has a compact design but powerful features. With light and sound alarms, it can effectively deter intruders.





X5C (ezNVR)

Wireless NVR

Flexible and easy to set up

A wireless NVR with HDMI and VGA outputs that can support up to 4 or 8 HD Wi-Fi cameras and has a strong, wall-penetrating signal.



Key Features



Supports 720p/1080p cameras



Wi-Fi signal range up to 300ft/100m



Connect up to 8 1080p Wi-Fi cameras (720p default with 1080p manual option)



Up to 6TB storage for 24/7 continuous live viewing and recording



Supports ONVIF conformant cameras

Application Scenario



Wireless →



HDMI/VGA Output →



Wired →



Internet →





HD IP Video Door System GDS3710

The GDS3710 is an IP Video Door System that also serves as a high-definition IP surveillance camera and IP intercom to offer facility access control and security monitoring for buildings of all sizes. This powerful IP Video Door System offers a 180-degree video viewing angle for wall-to-wall coverage, has a built-in RFID chip reader for secure keyless entry, includes a built-in microphone and speaker to support intercom functionality and offers alarm-in and alarm-out support for integration with existing security devices. The GDS3710 integrates with Grandstream's free management utility software, GDS Manager, allowing RFID card information, video feeds as well as the device itself to be fully managed by this software. Powered by an advanced Image Sensor Processor (ISP) and state-of-the-art image algorithms, the GDS3710 delivers 1080p FHD video resolutions and offers exceptional performance with HTTP API for 3rd party redevelopment. It features SIP/VoIP technology with 2-way audio and video streaming feeds loaded directly to smart phones, SIP endpoints and the GDS management software. The GDS3710 is equipped with integrated PoE for seamless installation, bright LEDs for illumination, motion detector for security protection, lighting control switch and more. The combination of the GDS3710, Grandstream's GXP21xx IP phones, GXV video phones, and GS-Wave mobile app provide a complete end-to-end solution for access control, video intercom, and security recording needs.



Powerful video resolutions up to 1080p



Built-in RFID chip reader for keyless entry



SIP video streaming to video intercom stations, IP phones, or smart phones simultaneously



Built with a metal casing to make it weatherproof and vandal resistant



Built-in hemispheric camera allows for 180-degree wall-to-wall coverage



Supports motion detection



Integrated PoE to power the device and provide a network connection



Built-in microphone and speaker offers voice options and intercom functionality

www.grandstream.com





UniFi® AC

802.11AC Dual-Radio Access Points

Models: UAP-AC-IW, UAP-AC-IW-PRO, UAP-AC-LITE, UAP-AC-LR, UAP-AC-PRO, UAP-AC-EDU

Unlimited Indoor/Outdoor AP Scalability in a Unified Management System

Breakthrough Speeds up to 1300 Mbps in the 5 GHz Band

Intuitive UniFi Controller Software





Yeastar IP Phone Systems

Easy Communication for Your Business



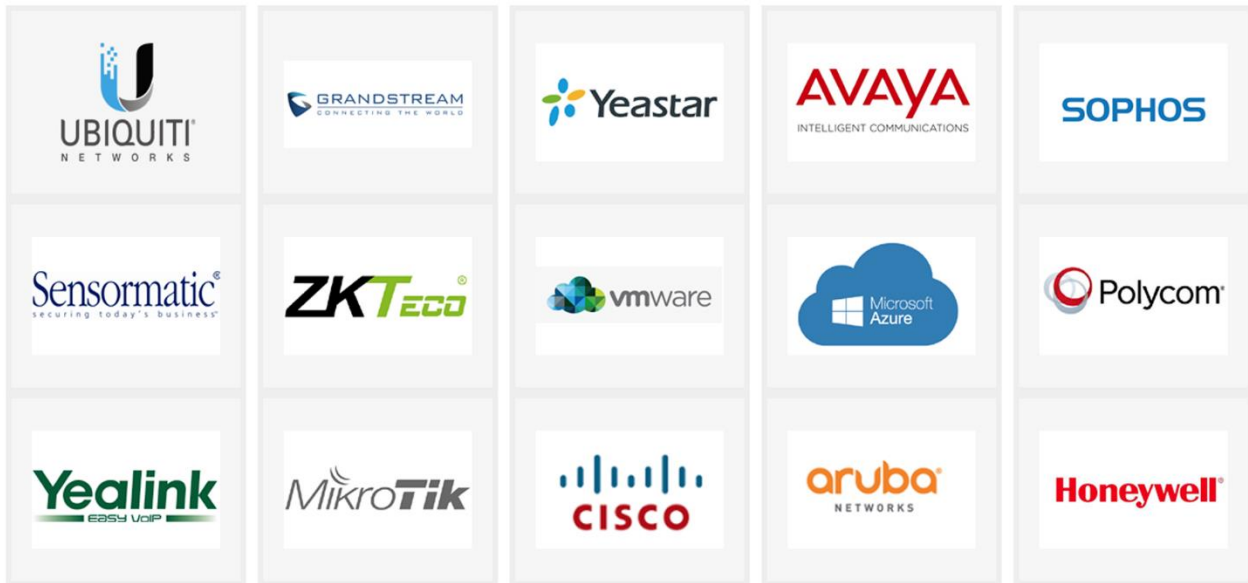
Yealink



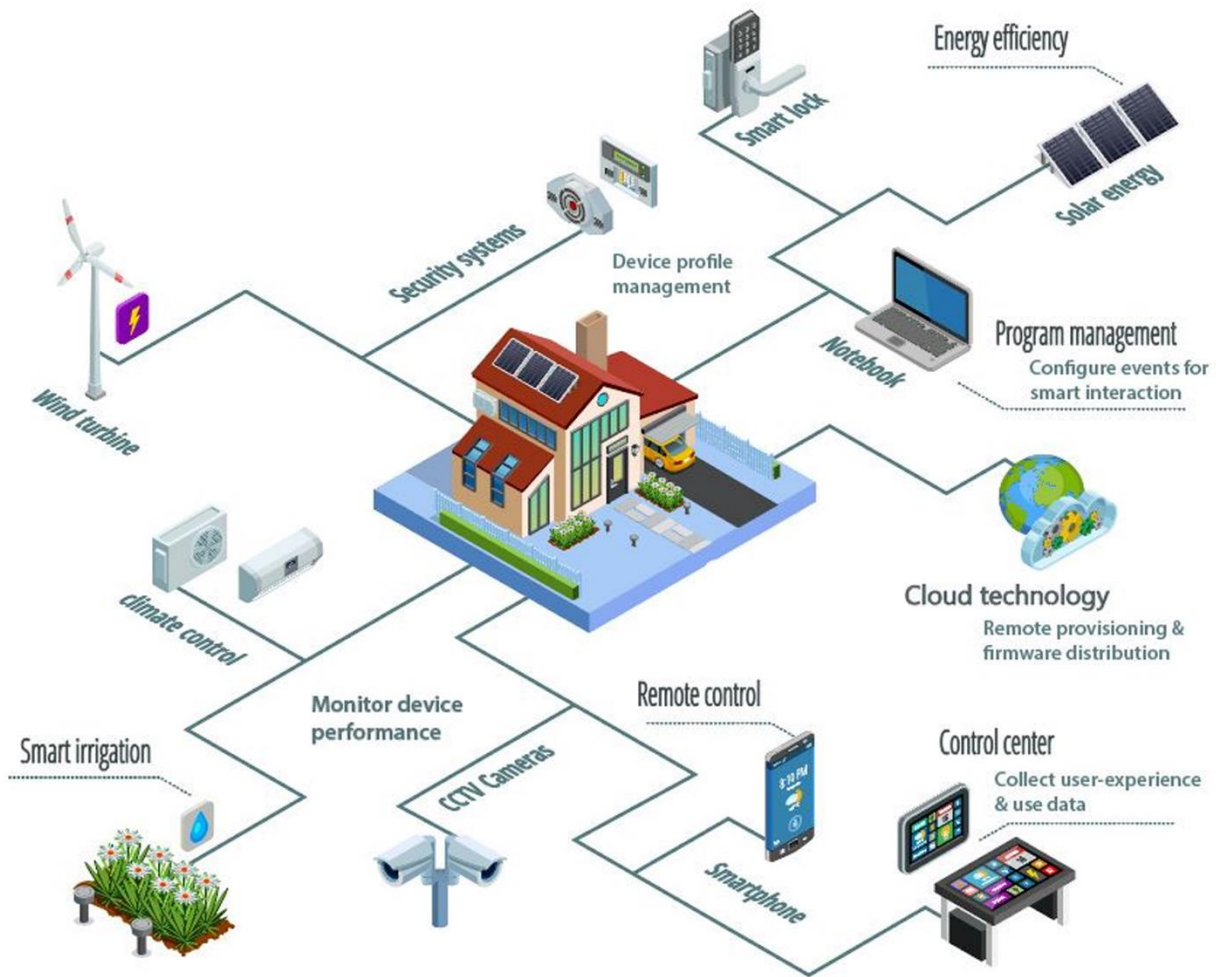
Yealink

SKYPE FOR BUSINESS





Smart Living intelligent infrastructure



Enhancing learning through interactivity



We understand education, and we use this knowledge to design technology that makes learning continuous and efficient. Our solutions keep information moving. They connect

WE PROVIDE ERP IMPLEMENTATION AND MAINTENANCE

ERP Implementation Life Cycle

1

Selection

2

Planning

3

Installation

4

Training

5

Maintenance

WEB DEVELOPMENT



Wireless Solutions



Security System Solutions



Time & Access Control Systems



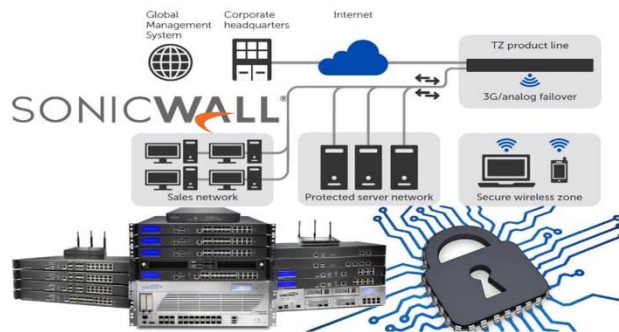
PABX Telephone & Call centre solution



Desktop and Server Support



Firewall Gateway Solutions



HIKVISION

EPSON

DELL

hp

Al Thuraya Souq, Unit No. 27, Building No. 419, Zone 56,
Street 340, Ain Khaled Intersection, Salwa Road. Doha,
P O BOX : 24545 , The State of Qatar.



Partners



MikroTik

GRANDSTREAM
CONNECTING THE WORLD



UBIQUITI
NETWORKS



Al Thuraya Souq, Unit No. 27, Building No. 419, Zone 56,
Street 340, Ain Khaled Intersection, Salwa Road. Doha,
P O BOX : 24545 , The State of Qatar.

Phone : +974 4432 4447 | 5520 1410 | 5050 3755

Email : it@alfatelecom.com.qa | Web : www.alfatelecom.com.qa

Quick Support : +974 6615 5760

